

T-VERTER

Easy for Operation



Cost efficiency

EMI Filter Built-in

16KHz Carrier Freq

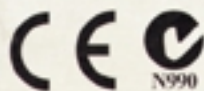
DIN Rail mounting
option

IP20,IP65 Enclosure



(Actual size)

E2 SERIES

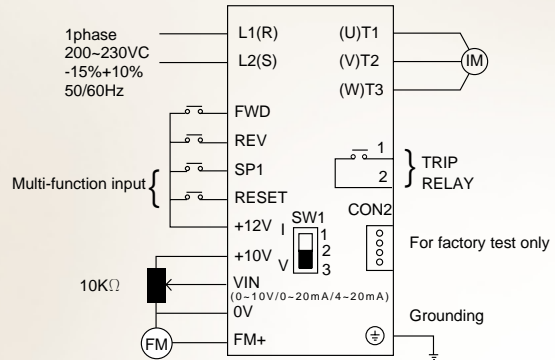


Simple but Best

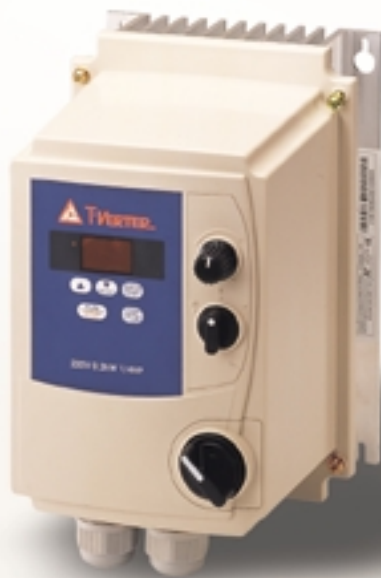
IP20



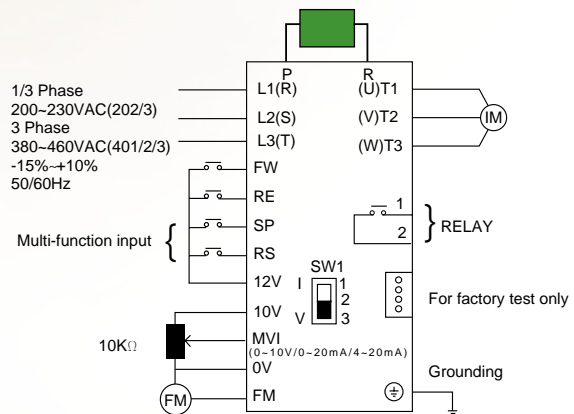
Interconnection of E2-2P2/2P5/201 Inverter



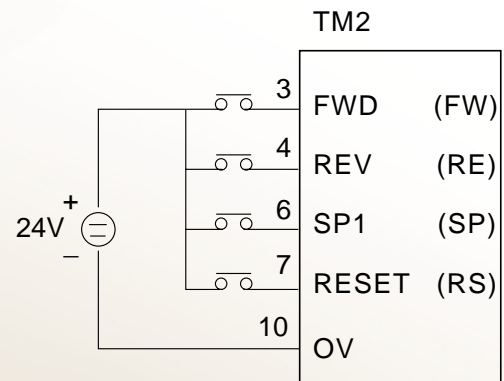
Meet IP65 NEMA4 standard



Interconnection of E2-202/203/401/402/403 Inverter



External DC24V wiring diagram



Ordering numbers

E2	-2	P5	-H	1	F	N4
Input Voltage	2:200VAC	Capacity	Specification	Phase of input power	Filter option	Enclosure
	4:400VAC	P2:0.25HP	M: Basic type	Blank:1 ϕ /3 ϕ	Blank: without	Blank:IP20
	1:120VAC*	P5:0.5HP	(CPU Version 1.6)	1:1 ϕ	filter	N4:IP65(NEMA4) Without switch
	*(Subject to demand)	01:1HP	H: Advanced type	3:3 ϕ	F: with filter	N4S:IP65(NEMA4) With switch
		02:2HP	(CPU Version 1.8 or above)			
		03:3HP				

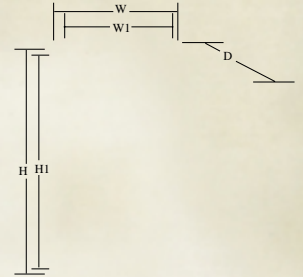
Specification

Model: E2-□□□-XXXX	1P2	1P5	2P2	2P5	201	202	203	401	402	403	
Rated Motor Power kW	0.2	0.4	0.2	0.4	0.75	1.5	2.2	0.75	1.5	2.2	
Rated Motor HP	1/4	1/2	1/4	1/2	1	2	3	1	2	3	
Input Current A(1Φ/3Φ)	6	10	3.0	5.2	9.4	15/9	20/12	2.6	4.6	6.5	
Rated Output Current A	1.4	2.3	1.4	2.3	4.2	7.5	10.5	2.3	3.8	5.2	
Rated Capacity kVA	0.53	0.88	0.53	0.88	1.6	2.9	4	1.7	2.9	4	
Input Voltage .	1 Φ 100-120V (-15%~+10%) , 50/60Hz(+/-5%)		1 Φ 200-240V (-15% ~ +10%) , 50/60Hz (+/-5%)			1/3 Φ 200-240V (-15% ~ +10%) , 50/60Hz (+/-5%)		3Φ 380-460V (-15% ~ +10%) , 50/60Hz (+/-5%)			
Output Voltage .	3Φ 200-240V							3Φ 380-460V			
Input Signal Type	PNP type (SOURCE) input (External DC24V allowed)										
Control Method	Sinusoidal wave PWM control										
Freq. Control	Freq. Range	1~200 Hz *1									
	Resolution	Digital : 0.1 Hz (1~99.9Hz); 1Hz (100~200Hz), Analog : 1Hz/60Hz									
	Keypad Setting	Directly adjusted by ▼▲ buttons.									
	Display	Three digital LED display frequency / inverter parameter / fault record / program version.									
	External Signal Setting	0~10V, 4~20mA , 0~20mA									
	Other function	Frequency upper and lower limit									
General Control	Carrier frequency	4~16kHz *1									
	Accel/Decel time	0.1~ 999 sec									
	V/F Pattern	6 Patterns									
	Torque control	Torque boost level adjustable									
	Multi-Function input	2 points for multi-speed 1(Sp1) /2(Sp2)*1 /Jog / Emergency stop / External bb / Reset									
	Multi-Function output	1a Relay for Fault / Running / Frequency agreed function									
	Braking Torque	20%					20% ~ 100% , breaking transistor built in				
	Other function	Decelerate or coast to stop, Auto reset, DC braking frequency / Voltage / Time setting.									
Protection function	Instantaneous over current	Approx 200% rated current									
	Overload	150% for 1min.									
	Over voltage	DC voltage > 410V					DC voltage > 800V				
	Under voltage	DC voltage < 200V					DC voltage < 400V				
	Momentary power loss	0 ~ 2 sec, restart by speed search									
	Stall Prevention	Accelerate / Decelerate / Constant speed									
	Output short circuit	Electronic protection									
	Ground fault	Electronic protection									
	Other function	Heat sink overheat protection , Current limit									
Enclosure	IP20 / IP65 (NEMA4)										
Operating temperature	-10 ~ 50°C										
Humidity	0~95% RH non-condensing.										
Vibration	Under 1 G (9.8 m/s ²)										
UL	UL508C										
CE	EN50081-1,EN50082-2,EN50178										
Installation	Mounting screw or DIN rail (Option).										

*1 E2-2P2/2P5/201 (CPU Version 1.6) have different specifications, please contact us for details

Inverter Dimension & Weight

Inverter Capacity	Enclosure IP20(mm)					Weight(kg)	
	W	H	D	W1	H1	With filter	Without filter
E2-2P2	72	131	118	61	116	0.86	0.77
E2-2P5						0.87	0.78
E2-201						0.91	0.82
E2-202	118	143	172	108	127.5	2.1	1.95
E2-203						2.2	2.05
E2-401						1.6	1.38
E2-402						1.62	1.4
E2-403						1.68	1.46

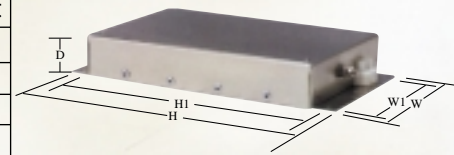


Inverter Capacity	IP65(NEMA4) without switch(mm)					Weight(kg)	
	W	H	D	W1	H1	With filter	
E2-2P2	140.6	215.6	170	123.4	198.9	3.2	
E2-2P5						3.2	
E2-201						3.2	
Inverter Capacity	IP65(NEMA4) with switch(mm)					Weight(kg)	
	W	H	D	W1	H1	With filter	
E2-2P2	140.6	215.6	182.5	123.4	198.9	3.4	
E2-2P5						3.4	
E2-201						3.4	

Peripherals

Class B type EMI Filter

Filter model	Inverter capacity	Enclosure IP20(mm)					Weight (kg)
		W	H	D	W1	H1	
E2F-2102	E2-2P2/2P5/201	76	156	25	60	145	0.42
E2F-2202	E2-202/203	123	173	39	107	158	1.12
E2F-4103	E2-401/402/403	123	173	39	107	158	1.12



Brake resistor

Inverter model	Resistor model	Specification		
		(Watt)	(ϵ l)	%ED
E2-202	BRN2-202	150	100	10
E2-203	BRN2-203	200	70	9
E2-401	BRN2-401	60	750	8
E2-402	BRN2-402	150	400	10
E2-403	BRN2-403	200	250	8

DIN Rail Kit : DINE2-201 (for all IP20 models)

; The information in this brochure is subject to change without notice.



TAIAN ELECTRIC CO., LTD.

7F.156-2 Sung Chiang Rd., Taipei, Taiwan, R.O.C.

Tel:886-2-2511-1181 Fax:886-2-2563-3586

<http://taian-electric.com.tw>

e-mail:customer@taian-electric.com.tw

